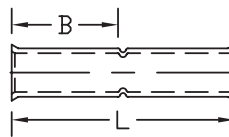
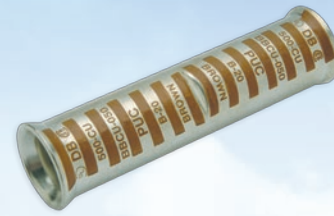


# Flared Crimp Splice - Long Barrel

## Type BBCU-FL

- Suitable for use with Class B, C, I, K, H, G, M and DLO conductors ♦
- Manufactured from high conductivity seamless copper tubing
- Tin-plated to inhibit corrosion
- Flared barrel entry provides easy cable insertion for fine stranded cables and minimizes strain during flexing and movement
- Positive cable stops to ensure proper insertion of conductors to full depth
- Long barrel provides high pull out force and added secureness for improved mechanical and electrical properties
- Color coded barrels are marked with die index numbers
- Connectors are suitable for voltages up to 35 KV if taped according to accepted practices, 5 KV is the maximum voltage level in all bare splice applications
- Connectors are UL listed and CSA certified with Penn-Union, Burndy T&B, Huskie, Greenlee and Versa-Crimp® style tooling



### BBCU-FL DIMENSIONS & INSTALLATION TOOLING INFORMATION

CATALOG NUMBER	COPPER CONDUCTOR SIZE	FIGURE DIMENSIONS (IN.)		COLOR CODE	INSTALLATION TOOLING			WIRE STRIP LENGTH
		INSERTION LENGTH "B"	OVERALL LENGTH "L"		PENN-UNION DIELESS MECHANICAL TOOLS	BURNDY DIE INDEX NO.	PENN-UNION DIE CATALOG NO.	
BBCU-3-FL	105/24 4 WELD; 3 AWG	1.13	2.38	White	TDM-250XF	9	T-9	1-1/4"
BBCU-1-FL	150/24 2 WELD; 1 AWG	1.38	2.84	Green		11	T-11	1-1/2"
BBCU-1/0-FL	225/24 1 WELD; 1/0 AWG	1.38	2.84	Pink		12	T-12	1-1/2"
BBCU-2/0-FL	275/24 1/0 WELD; 2/0 AWG	1.50	3.09	Black		13	T-13	1-5/8"
BBCU-3/0-FL	325/24 2/0 WELD; 3/0 AWG	1.50	3.09	Orange		14	T-14	1-5/8"
BBCU-4/0-FL	450/24 3/0 WELD; 4/0 AWG	1.63	3.34	Purple		15	T-15	1-3/4"
BBCU-030-FL	550/24 4/0 WELD; 300 kcmil	2.00	4.09	White		17	T-17	2-1/8"
BBCU-035-FL	650/24; 350 kcmil	2.00	4.09	Red		18	T-18	2-1/8"
BBCU-040-FL	775/24; 400 kcmil	2.13	4.34	Blue		19	T-19	2-1/4"
BBCU-050-FL	925/24; 500 kcmil	2.25	4.59	Brown		20	T-20	2-3/8"
BBCU-060-FL	1100/24; 600 kcmil	2.69	5.46	Green		22	T-22	2-13/16"
BBCU-065-FL	1325/24; 650 kcmil	2.75	5.63	Pink		300	T-300	2-7/8"
BBCU-075-FL	1600/24; 750 kcmil	2.88	5.84	Black		24	T-24	3"
BBCU-100-FL	1925/24; 1000 kcmil	3.00	6.09	White		27	T-27P	3-1/8"
BBCU-150-FL	2750/24; 1500 kcmil	3.19	6.46	Green		31	T-31P	3-5/16"

- ♦ For additional wire size recommendations please refer to page 73
- Connectors from 8 AWG - 2000 kcmil are UL listed per UL486A-B and CSA certified per C22.2 No.65 for POWER applications
- Connectors from 8 AWG - 500 kcmil are UL listed for grounding, bonding and direct burial applications per UL467
- Connectors from 8 AWG - 250 kcmil are CSA certified for grounding, bonding and direct burial applications per C22.2 No.41